



OckamSoft 5.2 features

New features

EyeApp™

OS5.2 now includes the mobile application EyeApp™. This application provides feeds of most of [OS5's pages](#) to any device with a web browser.

Learn more at <http://www.ockam.com/os5/EyeApp.pdf>

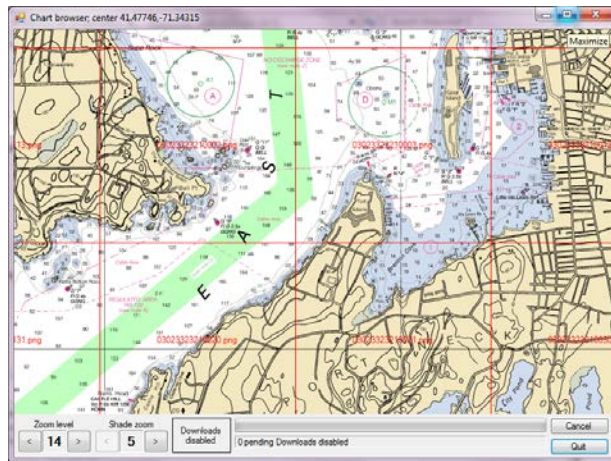
This is a registered application of OS5.



Chart browser

Chart browser is an off-line chart image downloading tool. It allows you to get more complete coverage than you are likely to get downloading charts in Race.

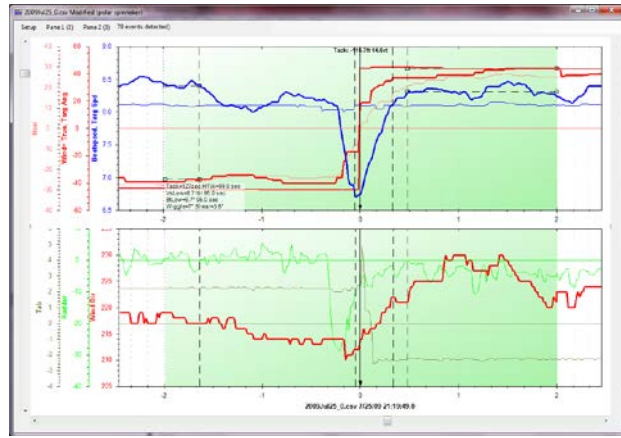
This is a registered application of OS5.



Log scanner

Log scanner is a graphical tool for analyzing performance. In this example, Log scanner has analyzed a tack showing a loss of 115 ft. to weather, and other metrics that can help improve handling.

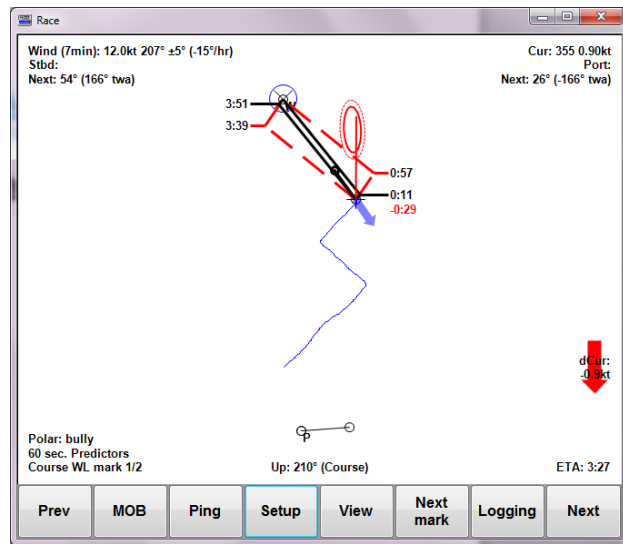
This is a registered application of OS5.



Show Current

Race graphic pages now optionally show the current as a vector (blue) and the amount of current with or against you (dCur -0.9 kt red against, green with).

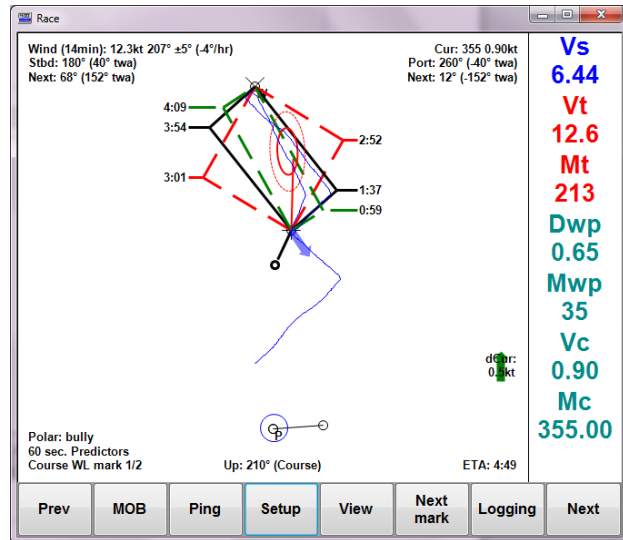
This feature is selected in the Race page setup, and shows on all appropriate graphical pages.



Sidebar

This is an optional window on the right showing numeric values of your choice. Number size and color coding can be set.

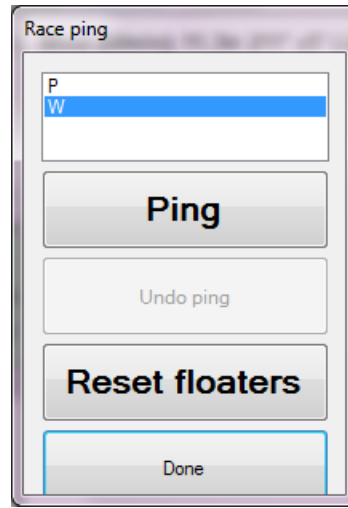
This feature is controlled from Main setup with the "Sidebar" button.



Race ping

Racecourse ping now has a dialog where you can select which mark to ping. Here you can also 'Reset floaters' (move all floater marks to their proper orientation relative to the origin), and even 'Undo ping's.

This feature is controlled from the race page "Ping" button.

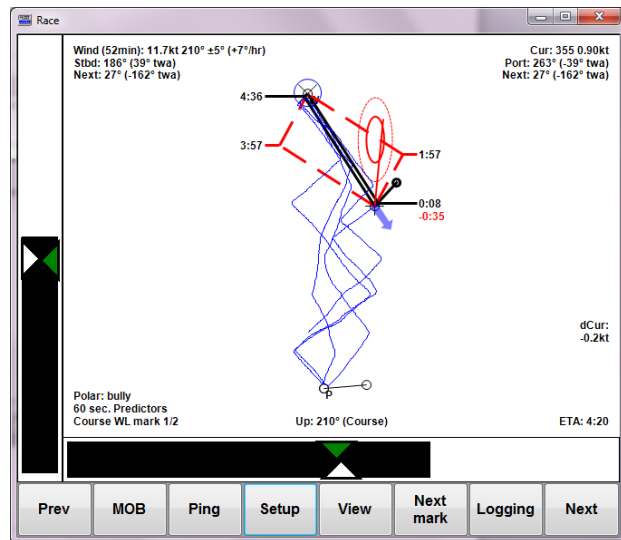


Steering bars

There are two steering bars available – Speed (on the left) and angle (bottom). The white diamonds are target speed and angle, and the green diamonds are **Wally™** speed and angle.

The angle bar is signed so if the markers are to the left of the bar, steer left (and vice versa). If you prefer wind orientation, upwind is the side the bar starts from.

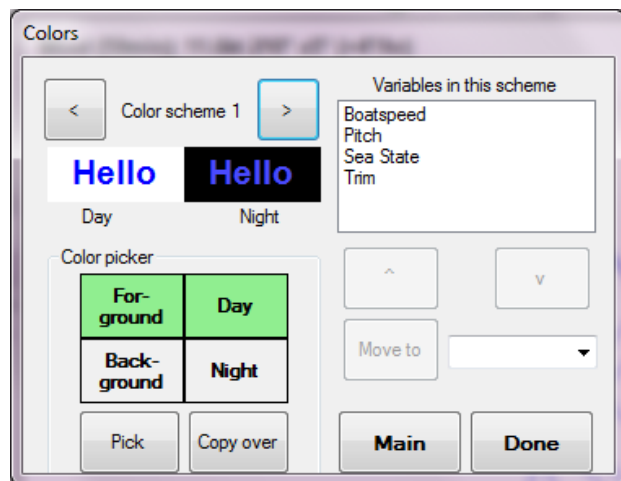
This feature is controlled from Main setup with the "Steering" button.



Colors

You can assign colors to the numeric display items to help differentiate them. There are 16 palettes, and you can assign any variable to any of the palettes. Each palette has a day and night setting.

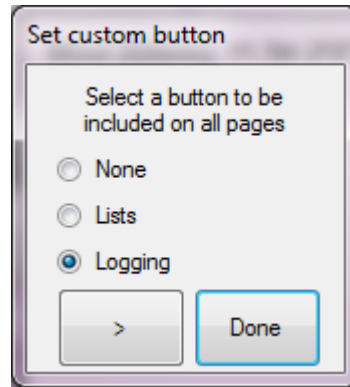
This feature is controlled from Main setup with the "Colors" button.



Custom button

You can add a custom button to all pages. Currently, there are two options; Lists and Logging.

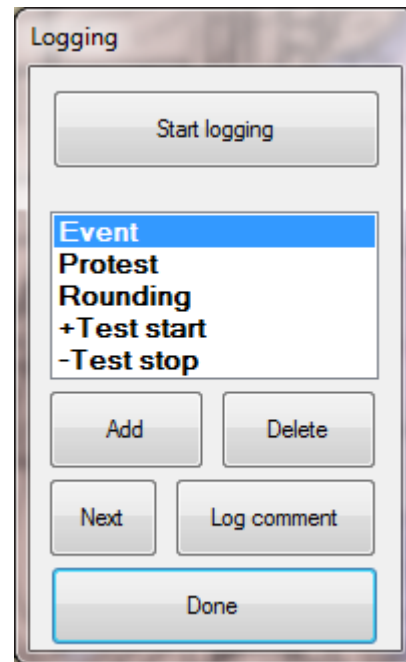
This feature is controlled from Main setup with the “Custom button” button.



Logging

If you set the custom button to logging, when the Logging button is pressed you get a dialog that lets you control logging, and log markers for specific events. You can add your own event markers if desired.

This feature is available when the Custom button Logging has been enabled (on main setup).

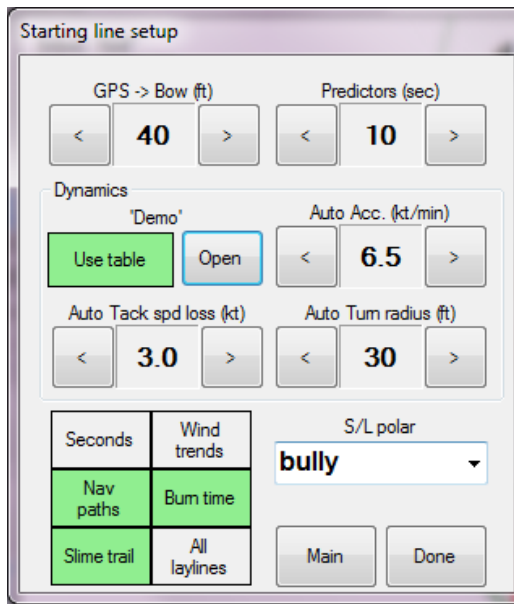


Tack dynamics

The three parameters used for the dogleg start (Acceleration, Tack loss and turn radius) can now be fed from a spreadsheet, or a combination of manual and automatic settings.

Here 'Demo.TackDynamics.csv' has been loaded, and all 3 functions are 'Auto'. If you spin any of the 3, that will become 'Manual'. Pressing 'Use table' returns to all auto, then off (i.e. all manual).

The demo file is located in c:\OckamSoft 5, and you can use it as a model for your boat. Remember to save as a CSV file.



More information

- OS5 main manual <http://www.ockam.com/os5/OS5.pdf>
- Quick start manual <http://www.ockam.com/os5/OS5QuickStart.pdf>
- EyeApp™ manual <http://www.ockam.com/os5/EyeApp.pdf>
- Loading charts <http://www.ockam.com/os5/LoadingCharts.pdf>
- Marks and Courses <http://www.ockam.com/os5/MarksAndCourses.pdf>
- OS5 pages manual <http://www.ockam.com/os5/OS5pages.pdf>
- SailPlan™ <http://www.ockam.com/os5/SailPlanExplained.pdf>
<http://www.ockam.com/os5/BuildingSailPlan.pdf>
- OS5 driver manual <http://www.ockam.com/os5/OS5driver.pdf>
- Registering <http://www.ockam.com/os5/Registration.pdf>